



One
Adoption
Agency
WEST YORKSHIRE

One Adoption West Yorkshire Quarterly performance report

**2020 – 2021
July to September**

Introduction/summary

This is the second quarterly report for 2020-21, providing an update on One Adoption West Yorkshire.

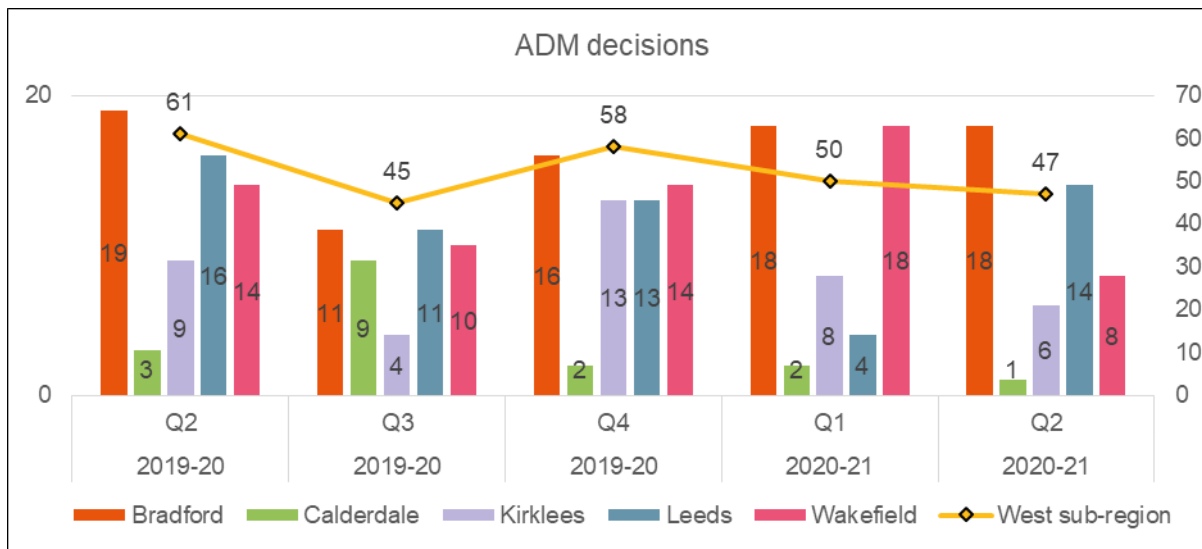
This report is based in the premise of how much work has been undertaken in the period, how well and what difference has it made. The report is a simple and concise report, with detailed tables in appendices. The report contains a number of tables and charts.

Children

This section of the report provides headline figures relating to children and young people at various stages of the adoption process within West Yorkshire. Greater detail, including a breakdown by the five local authorities, is contained within the graphs on the following page. The figures in bold are for the current quarter and those in brackets are for the same quarter of the previous year.

How much did we do?	How well did we do it?
<p>During the quarter</p> <ul style="list-style-type: none">• 324 (285) children left care, 39 (35) were adopted <i>During 2019/20 174 children were adopted, average 44 per quarter</i>• 47 (61) children had an ADM decision made <i>During 2019/20 220 children had ADM decision made, average 55 per quarter</i>• 49 (61) placement orders were granted <i>During 2019/20 180 placement orders were granted, average 45 per quarter</i>• 62 (51) children were matched to an adoptive family – 33 (26) inter agency placements 53% (51%) <i>During 2019/20 169 children were matched, average 42 per quarter</i>• 62 (53) children were placed with an adoptive family <i>During 2019/20 168 children were placed, average 42 per quarter</i>• 3 children in new EPP (Decision for EPP)• 6 (6) children in new EPP (placed in EPP) <i>During 2019/20 16 children were placed in new EPP, average 4 per quarter</i>• 21 (9) Children had a change of plan away from adoption <i>During 2019/20 37 children had a change of plan away from adoption, average 9 per quarter</i>• 2 (1) Child had an adoption disruption <i>During 2019/20 7 children had an adoption disruption, average 2 per quarter</i>	<p>Statutory Scorecard Data</p> <p>For the 39 (35) children who were adopted during quarter 2 2020/21, it took an average of:</p> <ul style="list-style-type: none">• 485 (445) days between a child entering care and moving in with their adoptive family (National Indicator is 426 days) (NI to be changed to A10)• 234 (233) days between a local authority receiving court authority to place a child and the local authority deciding on a match to an adoptive family (National indicator is 121 days) (England average is 178)• 18 (21) were placed within 426 days of entering care, this is 46% (60%)• 10 (10) were matched within 121 days, this is 26% (29%) <hr/> <p>For the 62 (53) children who were placed during quarter 2 2020/21, it took an average of:</p> <ul style="list-style-type: none">• 525 (506) days between a child entering care and moving in with their adopter family – *(29 of the 61 children took more than 500 days)* if these 29 children were taken out of the equation the average number of days would be 371• 221 (247) days between a local authority receiving court authority to place a child and the local authority deciding on a match to an adoptive family – (46 of the 61 children took more than 121 days) if these 46 children were taken out of the equation the average number of days would be 57• 25 (24) were placed within 426 days of entering care, this is 40% (45%)• 15 (15) were matched within 121 days, this is 24% (28%) <ul style="list-style-type: none">• 12% (13%) of children leaving care were adopted, (England average is 12%)

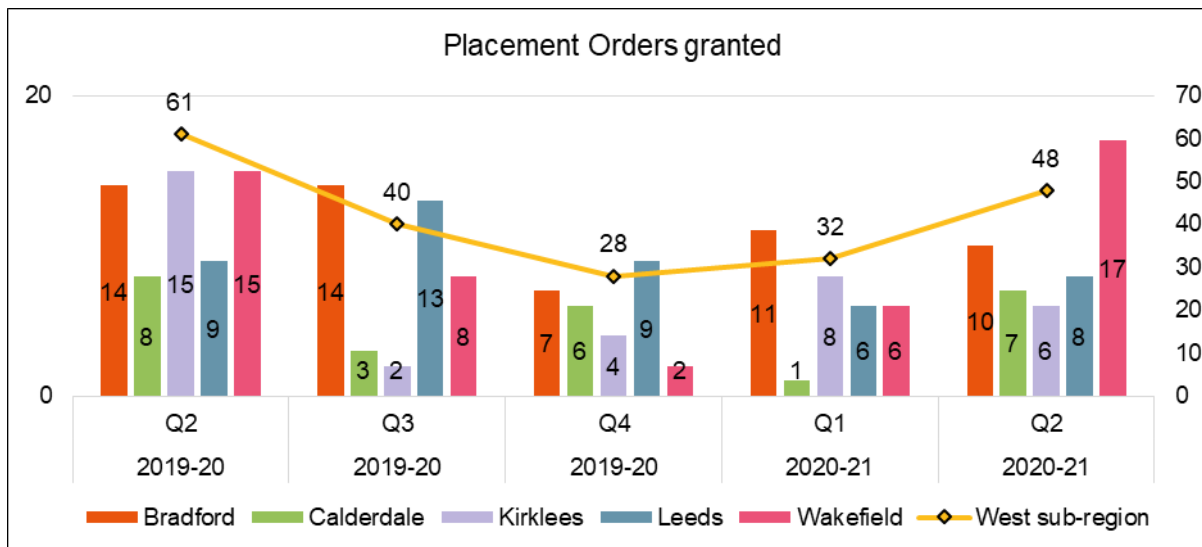
<p>How much did we do?</p> <p><i>At the end of the quarter</i></p> <ul style="list-style-type: none"> • 181 (209) children have an ADM decision but not yet matched • 191 (218) children have an ADM decision but are not yet placed • 137 (180) children have a placement order but are not yet placed. Of these, 61 (66) have been waiting for at least 18 months since entering care. 82 (109) children have been waiting more than 121 days since the placement order was made • 11 (14) child with an ADM decision has a potential match identified 	<p>How well did we do it?</p> <ul style="list-style-type: none"> • There has been an increase in the number of children leaving care through adoption in Q2, although court hearings for some adoption hearings have been postponed to a later date and it is likely this number will increase as the year progresses. • There has been a slight reduction this quarter in the number of ADM decisions made. • Within the quarter there has been an increase in the number of placement orders granted. • There has been an increase in the number of children match and placed with adoptive families this quarter. • There has been an increase in the number of children whose plan has changed from one of adoption; there is a proactive approach in ensuring that the plan of adoptions continues to be the right plan for individual children and this work continues with local authorities across the region • The number of children placed EPP has remained consistent with the last quarter. • Despite the continued challenges of the Covid-19 restrictions with varying regional restrictions transitions have progressed informed by individual risk assessments
<p>What would we like to do better?</p> <ul style="list-style-type: none"> • We would like to ensure that children are placed in a timely manner and whilst we are able to do this for some children, others take longer • Increase the number of children placed within the Yorkshire and Humber region • Continue to promote the use of early permanence placements where appropriate and to increase the number of early permanence placements • Understand the key factors of disruptions to inform future practice 	<p>What difference did we make?</p> <ul style="list-style-type: none"> • Of the 39 children adopted in Q2, 20 were children who wait longer due their individual and more complex needs and it is positive that these children have been adopted. • Of the 62 children matched, 35 were children who wait longer • Online profiling events continued during the quarter, with 1 virtual profiling event taking place, with in-house and VAA adopters in attendance, 12 children were profiled (including 2 sibling groups of 2 children) 14 expressions of interest were received for 8 children (including 2 sibling groups of 2 children), 1 link is progressing and 1 link is still being explored. • Continued to utilise early permanence placements



Commentary

This graph shows numbers of children who had an ADM decision over the last 5 quarters, thus showing figures for the same quarter in the previous year

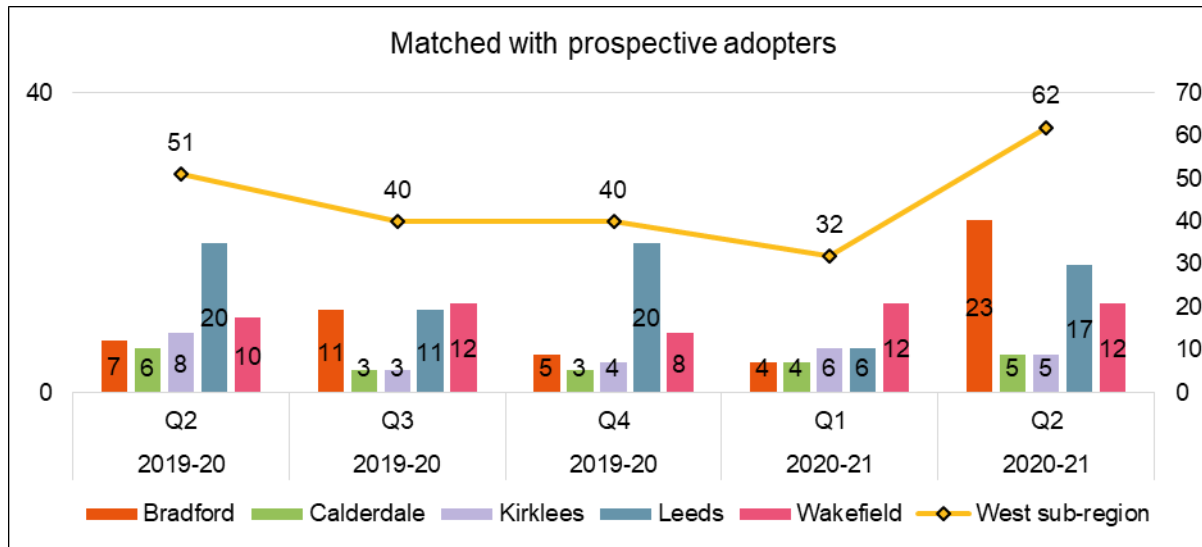
Quarter 2 has seen a slight overall reduction in the number of ADM decisions, with one authority seeing a significant increase on the previous quarter, two seeing a slight reduction and one with a more pronounced reduction on the previous quarter.



Commentary

This graph shows numbers of children who had a placement order granted over the last 5 quarters, thus showing figures for the same quarter in the previous year

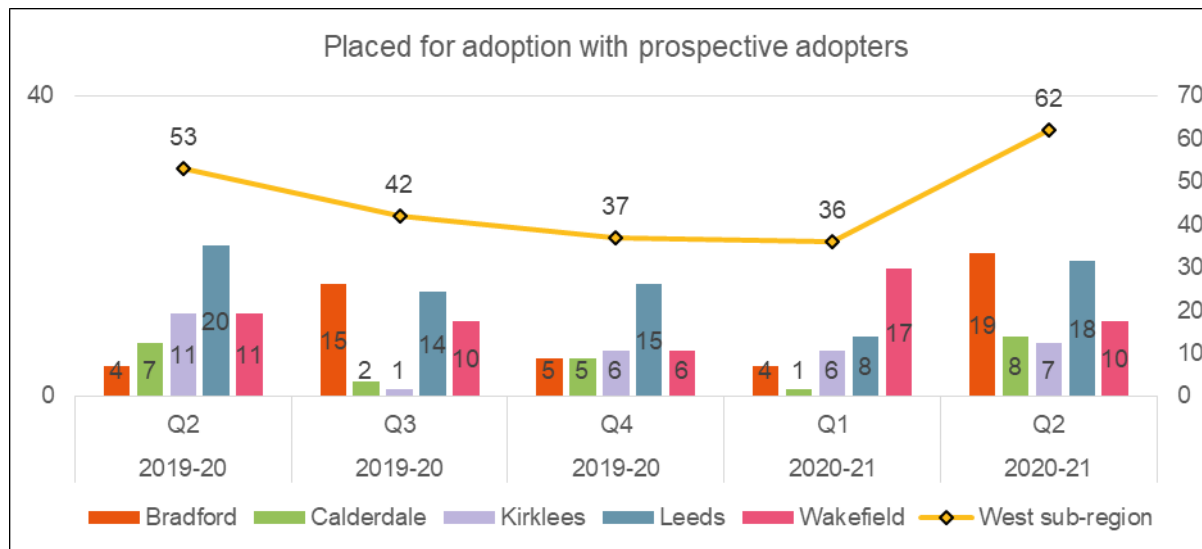
There has been an overall increase in the number of placement orders granted in the region, with 3 authorities seeing an increase and 2 a slight decrease.



Commentary

This graph shows numbers of children who were matched over the last 5 quarters, thus showing figures for the same quarter in the previous year

There has been a marked increase in the number of children matched with prospective adopters in quarter 2, with two areas having a significant increase on the previous quarter. This is likely to be related to the pandemic and introductions being delayed in Q1.

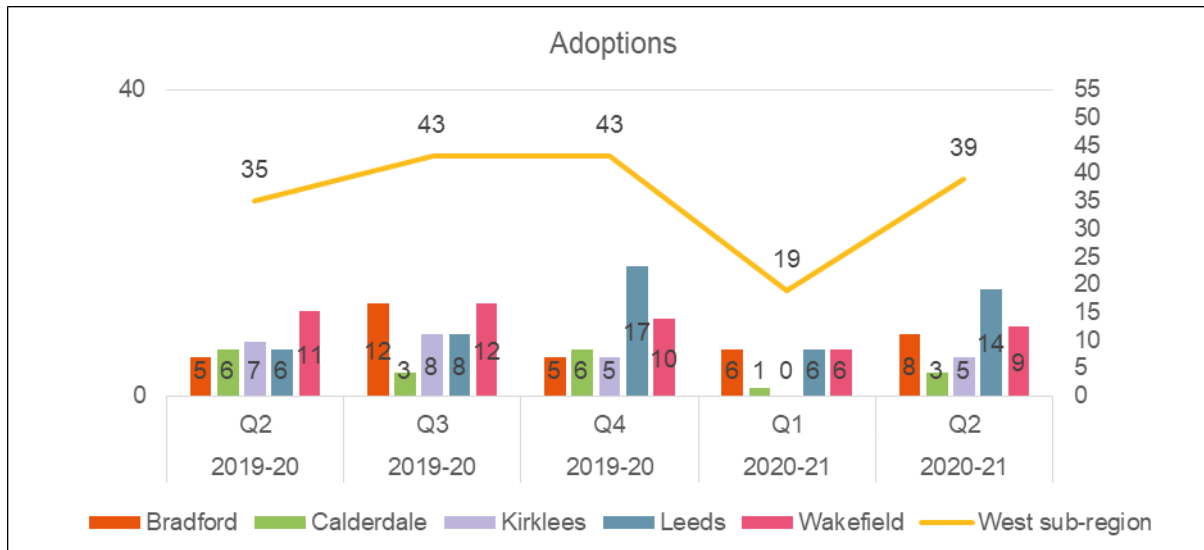


Commentary

This graph shows the number of children placed over the last 5 quarters, thus showing figures for the same quarter in the previous year.

The number of children placed for adoption with prospective adopters has increased in quarter 2, with 4 individual authorities seeing an increase in the number of children placed for adoption in the quarter.

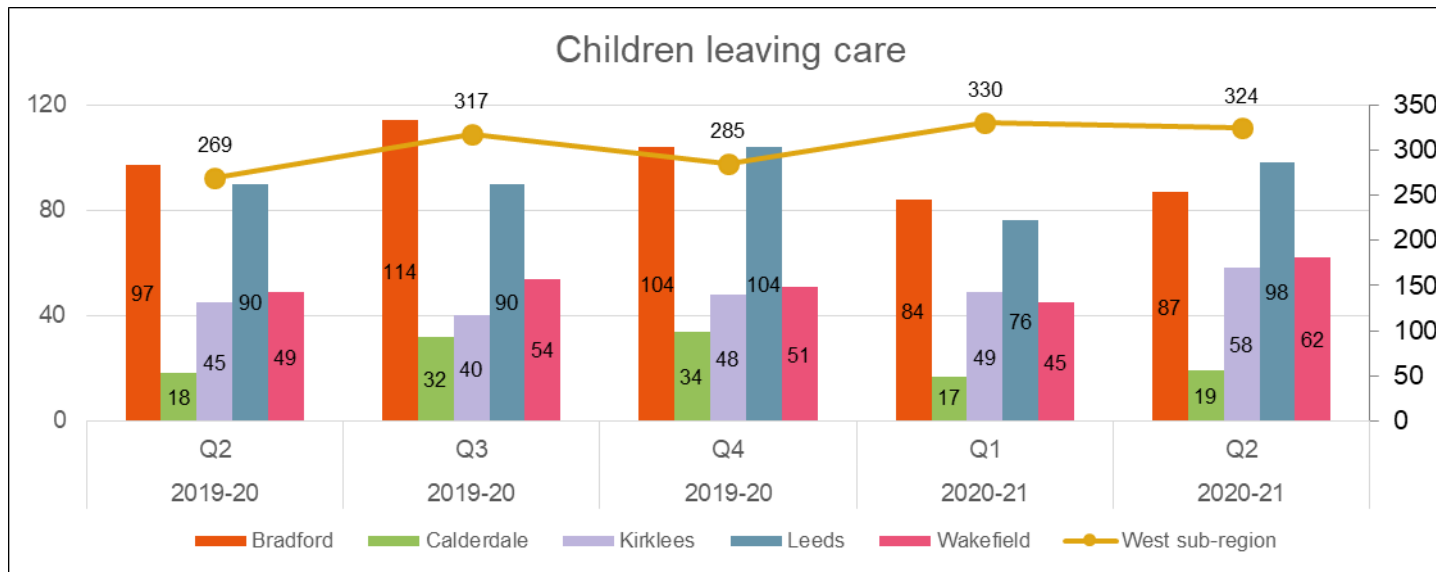
There was an overall reduction in the number of children placed for adoption in quarter 1; due to the Covid-19 pandemic some introductions were unable to proceed at that time due to the individual vulnerabilities of those party to introductions.



Commentary

This graph shows numbers of children who were adopted over the last 5 quarters, thus showing figures for the same quarter in the previous year

There has been a significant increase in the number of adoptions against the first quarter, where there was an impact of the Covid-19 pandemic with some court cases not progressing to adoption orders at that time.

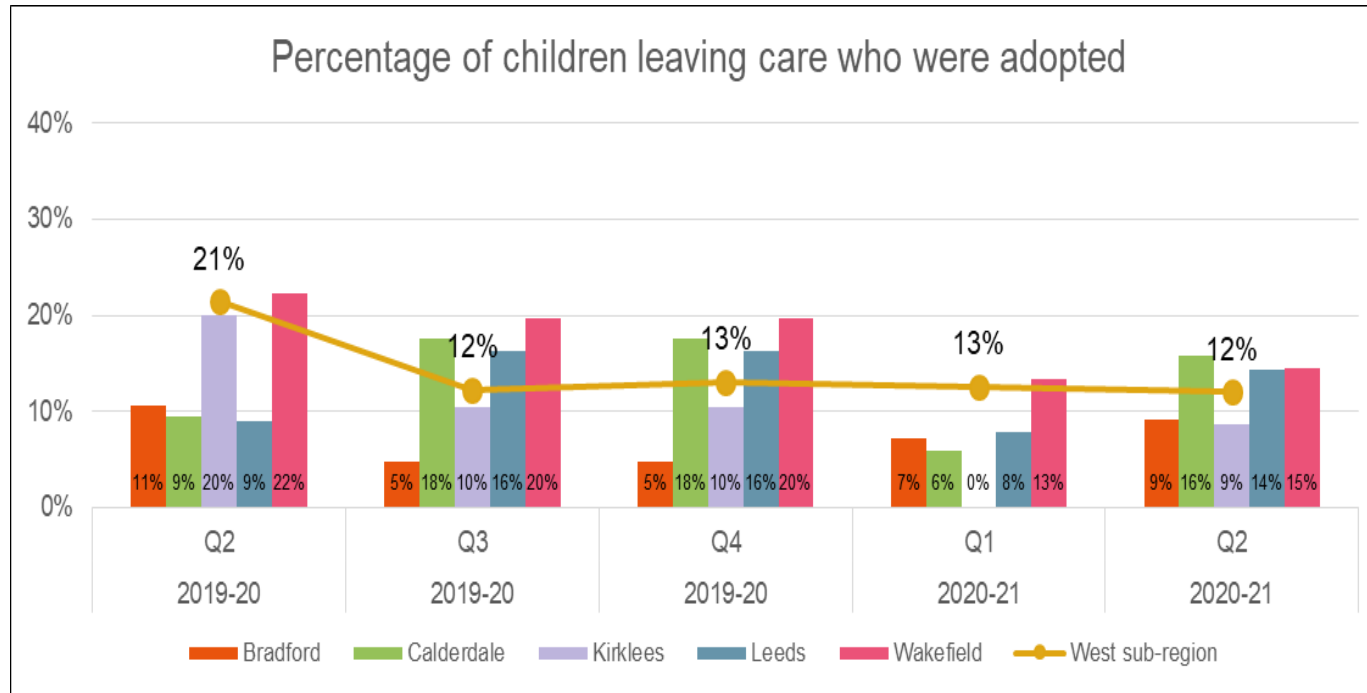


Commentary

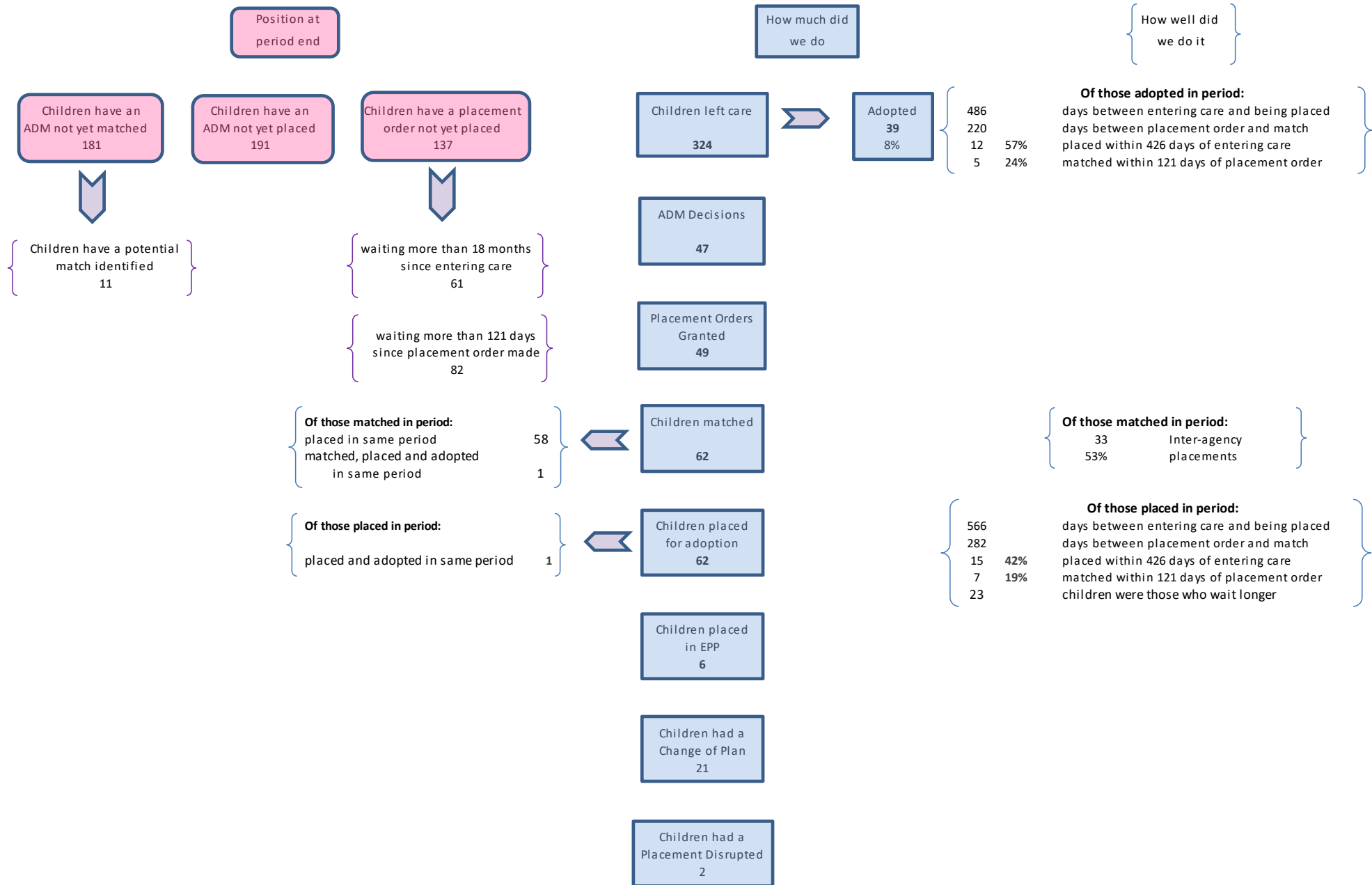
This graph shows the number of children leaving care over the last 5 quarters, thus showing figures for the same quarter in the previous year

Commentary

This graph shows the percentage of children leaving care who were adopted in the last 5 quarters, thus showing figures for the same quarter in the previous year



Performance Overview - Children

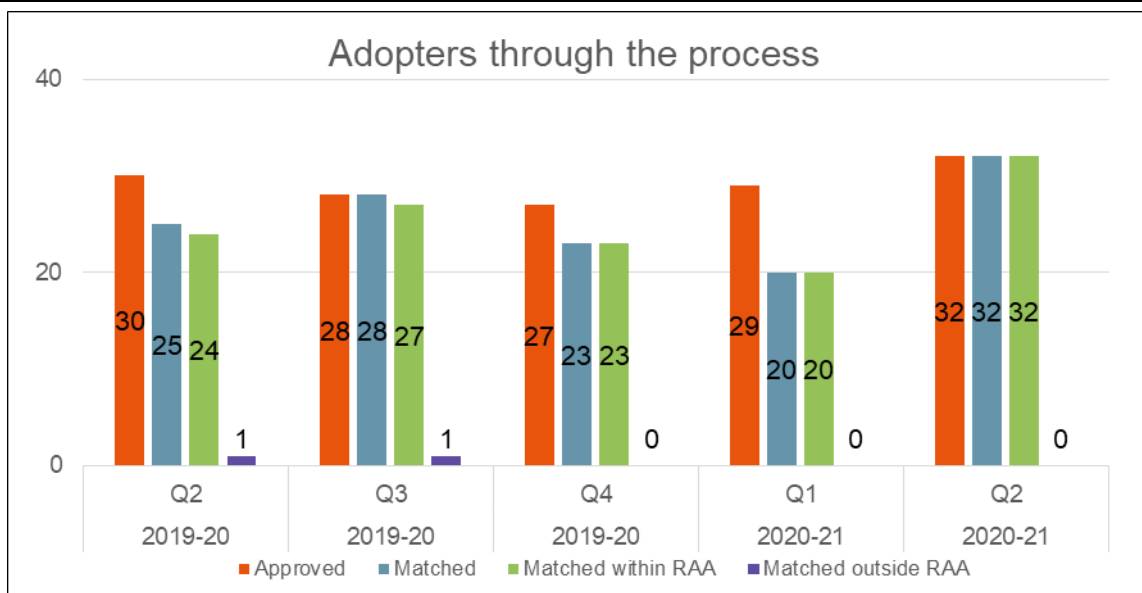


Adopters

This section of the report provides headline figures relating to prospective and approved adopters at various stages of the adoption process in One Adoption. Appendix two contains figures for the last 5 quarter to give comparison between same quarter in the previous year. Figures in bold are for current quarter, those in brackets are for the same quarter in the previous year.

How much did we do?	How well did we do it?
<p>During the quarter</p> <ul style="list-style-type: none"> • 243 (108) prospective adoptive families attended information sessions <i>During 2019/20 435 prospective adoptive households attended information sessions, average 109 per quarter</i> • 42 (51) prospective adoptive families started Stage 1 <i>During 2019/20 195 prospective adoptive families started Stage 1, average 49 per quarter</i> • 59 (31) prospective adoptive families attended preparation training <i>During 2019/20 129 prospective adoptive families attended preparation training, average 32 per quarter</i> • 37 (27) prospective adoptive families started Stage 2 <i>During 2019/20 119 prospective adoptive families started Stage 2, average 30 per quarter</i> • 32 (30) prospective adoptive families were approved, of these, 6 (2) families were Foster Carer Adopters <i>During 2019/20 113 prospective adoptive families were approved, average 28 per quarter</i> • 32 (25) prospective adoptive families were matched, of these, 0 (1) families were matched with children outside the RAA and 32 (24) were matched with children from within the RAA <i>During 2019/20 102 prospective adoptive families were matched, average 26 per quarter</i> • 33 (27) prospective adoptive families had a child(ren) placed, of these, 0 (1) families had children placed from outside RAA and 33 (26) had children placed from within the RAA <i>During 2019/20 103 prospective adoptive families had a child placed, average 26 per quarter</i> • 24 (27) adoptive families adopted a child/young person <i>During 2019/20 99 adoptive families adopted a child/young person, average 25 per quarter</i> • 11 (14) prospective adoptive families withdrew from the process <i>During 2019/20 39 prospective adoptive families withdrew from the process, average 10 per quarter</i> 	<p>How well did we do it?</p> <ul style="list-style-type: none"> • Of those prospective adoptive families who ended Stage 1 (51) in the quarter, they were in Stage 1 for an average of 5 months <ul style="list-style-type: none"> ○ 24% were within timescales (Lowest was 0 month, highest was 14 months) ○ Those still in Stage 1 (89) at the end of the quarter have been in Stage 1 for an average of 4 months ○ 38% are within timescales • Of those prospective adoptive families who ended Stage 2 (32) in the quarter, they were in Stage 2 for an average of 4 months <ul style="list-style-type: none"> ○ 81% were within timescales (Lowest was 1 months, highest was 21 months) ○ Those still in Stage 2 (50) at the end of the quarter have been in Stage 2 for an average of 3 months ○ 84% are within timescales <p>Of those approved 8 months was the average time between registration of interest and approval.</p> <p>15 (16) adoptive families were matched within three months of their approval; 17 (8) were matched after three months of their approval</p> <p>The average time taken from approval to matching was 6 (3) months</p>

<p>How much did we do?</p> <p><i>At the end of the quarter</i></p> <ul style="list-style-type: none"> • Of the 102 (100) individual approved adopters (not yet matched), 51 (47) are female and 51 (42) are male. 14% (24%) are from a BME background • 139 (100) prospective adoptive families are not yet approved • 89 (63) prospective adoptive families are in stage one; 50 (37) are in stage two • 53 (47) approved adoptive families are yet to be matched <ul style="list-style-type: none"> ○ 7 (8) of these families have been waiting more than six months ○ 18 (14) of these families have a matching panel booked ○ 12 (0) of these families have a match identified but no panel date booked • 10 adoptive families have children placed in EPP • 13 (13) prospective adoptive families are on hold 	<p>How well did we do it?</p> <p>There continues to be a higher number of prospective adopters within the assessment process than in the same period last year, which is a positive reflection of the recruitment and engagement of enquirers.</p> <p>From Quarter1 to Quarter2 we have seen a slight decrease in the number of people in stage one, and an increase of those in stage two. This demonstrates the progress of applicants through the adoption process. We now have a high number of people in stage two of the adoption process.</p> <p>Covid-19 restrictions have continued to impact upon the timeliness of applicants progressing through the adoption process due to changes in personal circumstances, the ability to complete the necessary checks and the circumstances of One Adoption staff.</p> <p>We have increased the number of available adopters for children in West Yorkshire, with 6 more families being available than in the same quarter in the previous year.</p> <p>We have seen a reduction in the number of approved and available adopters from a BME background.</p>
<p>What would we like to do better?</p> <p>We would like to move people through the adoption process in a more timely way and avoid any delays in either stage of the process. We have increase our assessment capacity through the appointment of sessional workers and have requested funding to increase the number of R&A social workers within the agency.</p> <p>We need to increase the number of BME adopters, in particular Black African and Black Caribbean adopters, to meet the needs of our children. We are working with partners from the voluntary sector to address this,</p> <p>We would like to increase the number of adopters open to siblings due to the demographic of the children needing adoptive families. We have recently introduced specific training for prospective adopters to encourage them to consider the benefits of adopting a sibling group.</p>	<p>What difference did we make</p> <p>We have developed our training and preparation offer to prospective adopters to include online preparation training, EPP, Adopting Siblings and will soon be providing training to Experienced Parents Adopting, Foster Carers Adopting and People Connected by Adoption. This has ensured that adopters are better prepared to meet the needs of adopted children.</p> <p>We have continued to increase the number of approved adopters and increased our capacity to respond to the increased demand for assessment.</p> <p>We have increased Adoption Panel capacity to respond to the increased need for approvals and matches to avoid delay for children and families progressing through the process.</p>

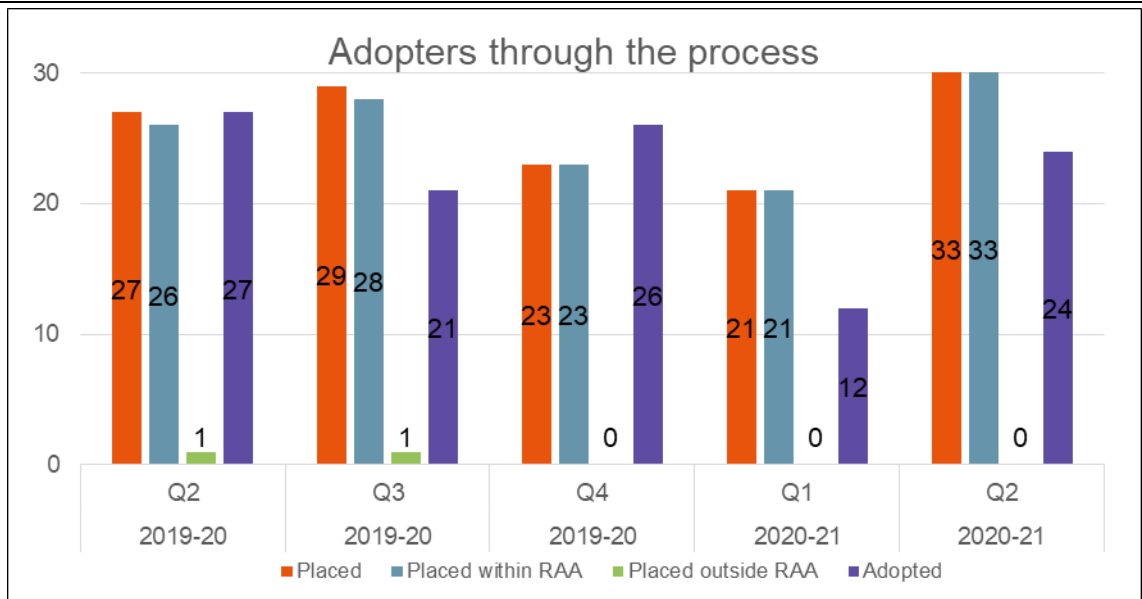


Commentary

This graph shows numbers of adopters going through the process from 2019-20 Quarter 2 through to 2020-21 Quarter 2

This provides a comparison of the same quarter in the previous year

This Quarter we have approved more adopters than during the same quarter last year, and than in any other quarter subsequently. This is a positive indicator of the progress of families through the adoption process, and of the number of families able to provide adoptive families for children within the region.



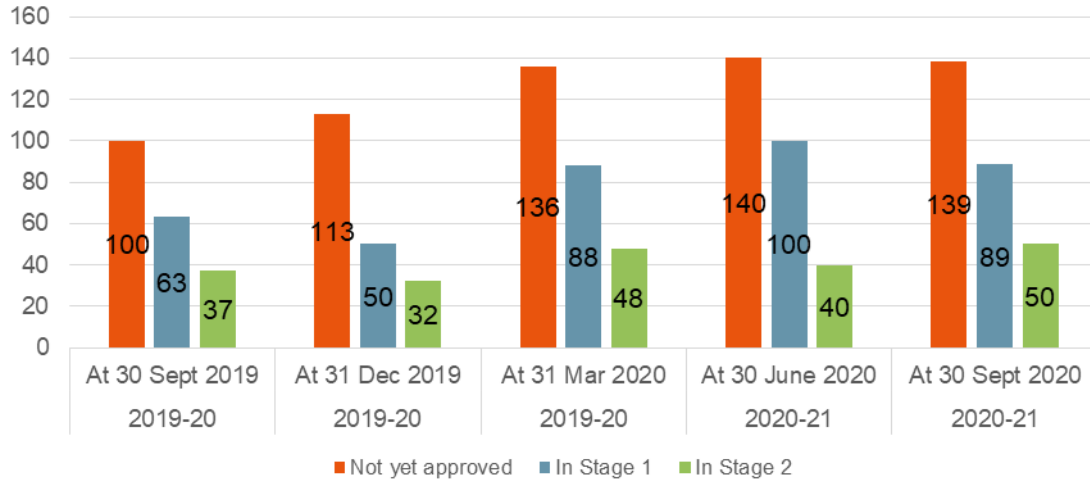
Commentary

This graph shows numbers of adopters going through the process from 2019-20 Quarter 2 through to 2020-21 Quarter 2

This provides a comparison of the same quarter in the previous year

There has been an increase in the number of adopters having children placed with them, all of who have been children from within the RAA. There has been a slight decrease in the number of adoption orders, which is a reflection of current court capacity, but it is positive to see that this has increased significantly from Quarter 1.

Position at end of Quarter

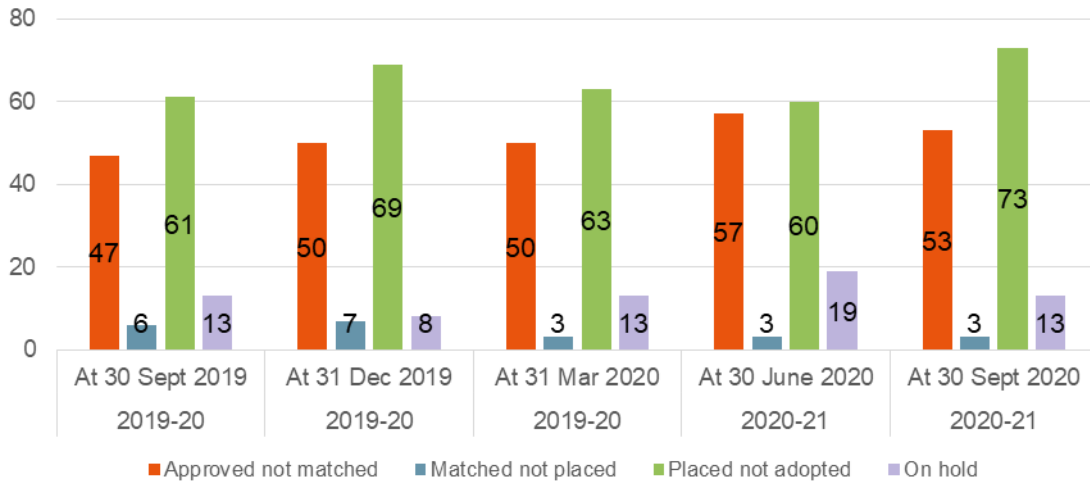


Commentary

This graph shows the number of adopters at various stages in the process at the end of each quarter. It shows the last 5 quarters so we can compare the same quarter in the previous year.

There continue to be significantly higher numbers of adopters within the process than in the same quarter of the previous year. The numbers have remained consistently high for the last three quarters. In Quarter 2 there are more adopters in Stage Two than in previous quarters, which is a positive indicator for the number of approved adopters in Quarters 3 and 4.

Position at end of Quarter



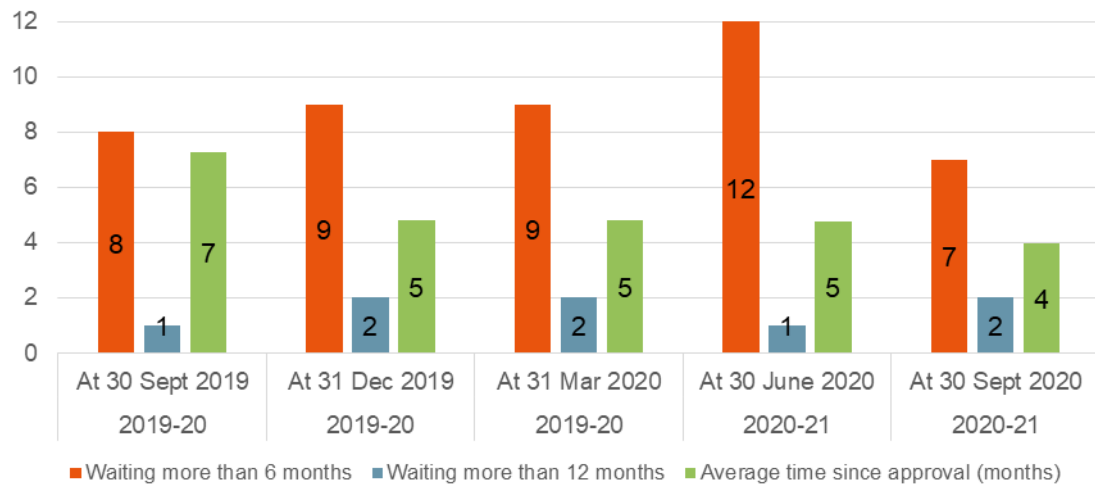
Commentary

This graph shows the number of adopters at various stages in the process at the end of each quarter. It shows the last 5 quarters so we can compare the same quarter in the previous year.

The number of families with children placed, not yet adopted, have continued to rise over the course of the year. In many cases applications are with the Court and are awaiting a hearing date when court capacity allows.

The number of approved and available adopters remains higher than in the same quarter last year. The number of children matched not placed remains low, which demonstrates how children have continued to be moved to their adoptive families despite the Covid19 Pandemic.

Position and timelines at end of Quarter

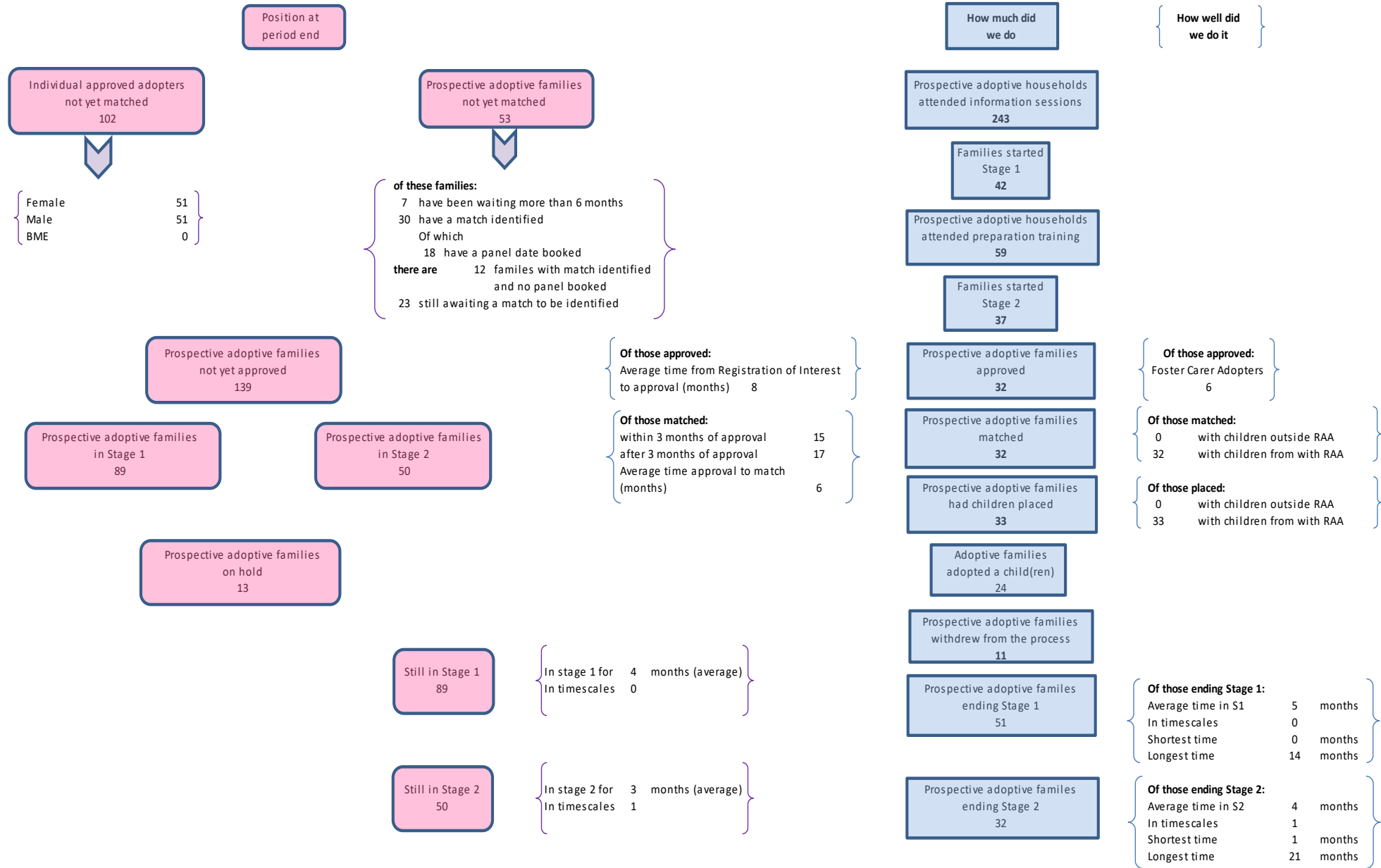


Commentary

This graph shows the number of adopters approved and not matched at the end of each quarter and the timeliness. It shows the last 5 quarters so we can compare the same quarter in the previous year.

The average time adopters have waited to be matched have decreased in the last quarter, which reflects the hard work of the social workers in progressing plans for children and families. There are fewer families waiting more than six months to be matched than in previous quarters, which is also positive. Some of these families have children already placed with them via Early Permanence Placements and are awaiting the outcome of Court Proceedings before a match can be considered.

Performance Overview – Adopters



Snapshot Figures

This section of the report looks at characteristics of prospective adopters who are approved but not yet matched and those characteristics of children still waiting to be matched as at the end of the quarter.

Characteristics of those adopters who are approved and not yet matched

Ethnicity	Number of individuals
African	2
Any other White background	10
Caribbean	1
Indian	1
Pakistani	7
White and Black Caribbean	1
White British	78
White Irish	2
TOTAL INDIVIDUALS	102

Religion	Number of individuals
Christian	53
Muslim	8
No religion	31
Other	10
TOTAL INDIVIDUALS	102

Characteristics of children who have a decision but not yet matched (182), of these, 128 have a Placement Order

Ethnicity	Number of children
African	1
Any other Black background	1
Any other ethnic group	11
Any other Mixed background	4
Any other White background	11
Gypsy/Roma	6
Indian	1
Information not yet obtained	7
Pakistani	1
Traveller of Irish Heritage	1
White and Asian	6
White and Black African	1
White and Black Caribbean	1
White British	129
TOTAL INDIVIDUALS	181

Children who wait longer (more than one characteristic)	Number of children
Part of a Sibling Group	93
With a Disability	3
BME	34
Aged 5 years +	24
TOTAL INDIVIDUALS	154

36 Children have 2 of above characteristics

4 Children have 3 of above characteristics

Of those above

ADOPTERS

Certain characteristics specified	Number of Households
Potential Match	30
Not specified any age group	48
Specified 0-4 years	47
Sibling groups	12
Specific Gender	7
Open to EPP	21

<p>How much did we do?</p> <p><i>During the quarter</i></p> <ul style="list-style-type: none">• 131 Adoption Support enquiries received• 161 cases were allocated• 51 Adoption Support assessments were started• 56 Adoption Support assessments were completed• 80 Adoption Support cases were closed <p><i>At the end of the quarter</i></p> <ul style="list-style-type: none">• 744 Active cases• 86 cases were awaiting allocation	<p>How well did we do it?</p> <ul style="list-style-type: none">• For those cases allocated in the quarter it took an average of 152 days• For those assessments completed in the quarter it took an average of 117 days from start of assessment to completion (this is for OAWY workers only)• Of those cases closed in quarter<ul style="list-style-type: none">○ 1 was aged 0-23 months○ 4 were aged between 2-4 years○ 54 were aged 5+ years○ 20 were adults (1 other, no DOB recorded) <p>Of the active cases at the end of the quarter</p> <ul style="list-style-type: none">○ 17 were aged 0-23 months○ 110 were aged 2-4 years○ 540 were aged 5+ years<ul style="list-style-type: none">▪ 376 were aged 5-11 years▪ 164 were aged 12-17 years○ 77 were adults
---	--